

Specifications | Splitters

| Type | Wedge set | Required drill hole diameter ¹ | Minimum drill depth | Splitting distance | Splitting force, theoretical | Splitting force, effective | Weight ³ | Length Splitting Cylinder | Length wedge set | Article no. |
|------|-----------|---|---------------------|----------------------|------------------------------|----------------------------|---------------------|---------------------------|------------------|--------------|
| | | mm | mm | mm | kN / t | kN / t | kg | mm | mm | |
| C2S | N | 31 - 32 | 270 | 9 | 3490 / 355 | 1913 / 195 | 17 | 745 | 140 | 8381 0402 10 |
| C4E | N | 35 - 36 | 430 | 10 | 4524 / 461 | 2256 / 230 | 21 | 995 | 250 | 8381 0406 25 |
| C4E | WL | 35 - 38 | 540 | 14 | 3267 / 333 | 1864 / 190 | 22 | 1145 | 400 | 8381 0406 40 |
| C9 | N | 45 - 48 | 410 | 18 - 53 ² | 2995 / 305 | 1962 / 200 | 22 | 1020 | 230 | 8381 0409 00 |
| C9 | L | 48 - 50 | 580 | 18 - 53 ² | 2995 / 305 | 1962 / 200 | 23 | 1190 | 400 | 8381 0409 40 |
| C10S | N | 41 - 43 | 630 | 18 | 4945 / 504 | 2550 / 260 | 33 | 1400 | 230 | 8381 0010 00 |
| C10S | Jura | 41 - 43 | 560 | 18 | 4052 / 413 | 2158 / 220 | 32 | 1340 | 380 | 8381 0010 00 |
| C12 | N | 45 - 48 | 610 | 19 - 60 ² | 6061 / 618 | 3507 / 358 | 31 | 1290 | 380 | 8381 0412 38 |
| C12 | L | 45 - 48 | 680 | 15 - 44 ² | 8082 / 824 | 4048 / 413 | 32 | 1360 | 450 | 8381 0412 45 |
| C12 | W | 45 - 48 | 550 | 24 - 80 ² | 4849 / 494 | 3150 / 321 | 31 | 1250 | 340 | 8381 0412 50 |

¹ Smallest diameter is most effective² With one enlarging counter wedge and one special enlarging counter wedge³ Without hydraulic hoses

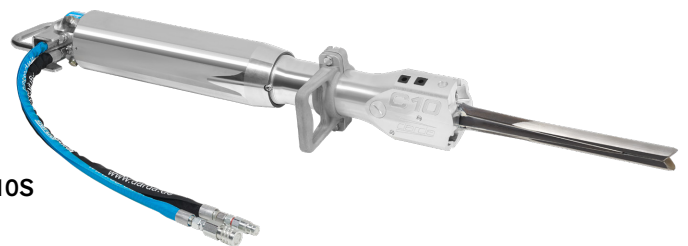
C2S



C9



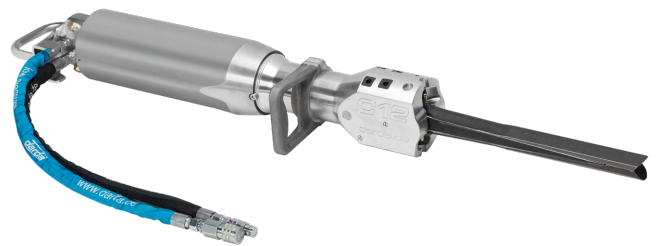
C4E



C10S

Specifications – Enlarging counter wedges

| Type | Enlarging counter wedges Article no. | Special enlarging counter wedges Article no. |
|-------|--------------------------------------|--|
| C4E N | 3390 0141 03 | – |
| C9 N | 3390 0246 11 | 3390 0246 21 |
| C9 L | 3390 0246 31 | 3390 0246 51 |
| C12 N | 3390 0236 00 | 3390 0280 00 |
| C12 L | 3390 0236 21 | 3390 0280 21 |
| C12 W | 3390 0236 11 | 3390 0280 11 |



C12

Specifications | Hydraulic hoses

| Type | Length ¹ mm | Number of Splitters | Article no. |
|------|------------------------|---------------------|--------------|
| S1 | 10 | 1 | 8381 0504 02 |
| S1 | 20 | 1 | 8381 0504 03 |
| S2 | 10 | 2 | 8381 0504 10 |
| S2 | 20 | 2 | 8381 0504 11 |
| S3 | 20 | 3 | 8381 0504 29 |

¹ Distance between Power Unit and Splitter

Specifications | Special Lubricant

| Quantity/container | Article no. | |
|--------------------|--------------|--------------------|
| 1 kg | 3391 0942 00 | Hazardous material |
| 18 kg | 3391 0980 50 | Hazardous material |

Specifications – Pressure shells

| Suitable for | Required drill hole diameter mm | Minimum drill depth mm | Article no. |
|--------------|---------------------------------|------------------------|--------------|
| C9 N | 100 | 410 | 3390 0357 00 |
| C12 N/W | 100 | 610 | 3390 0429 00 |