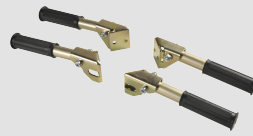


General information on portable Power Units

- Two-stage pump (low pressure and high pressure)
- Oil filter in return line
- Oil filler neck with sieve
- Portable
- Mobile due to transport wheels and extendable handle bar
- Manifold block with pressure gage
- Oil level indicator with temperature display
- Connection of three devices possible
- Possibility of securing against start-up by third parties (accident prevention)
- Complies with Directive 2000/14/EC (noise emission)

Accessories



Carrying aid for two persons



Safety box (GFCI ground fault circuit interrupter)



Quick couplings

Specifications | Hydraulic Power Units

Type	Power system	Weight	Length	Width	Height	Flow rate Low-pressure stage	Flow rate High-pressure stage	Filling capacity, oil tank	LWA	Operating pressure High-pressure stage
		kg / lb	mm / in	mm / in	mm / in	l/min / gal/min	l/min / gal/min	l / gal	dB	bar
AP2	Compressed air ¹	40 / 88	600 / 24	398 / 16	426 / 17	5.0 / 1.3	1.6 / 0.4	5.0 / 1.3	92	500
BP2	Gasoline	45 / 99	600 / 24	398 / 16	426 / 17	5.0 / 1.3	1.6 / 0.4	5.0 / 1.3	101	500
EP2 DUO	Electric ² 230V/400V ³	52 / 114	600 / 24	398 / 16	426 / 17	5.0 / 1.3	1.6 / 0.4	5.0 / 1.3	92	500
EP2 110V	Electric ²	50 / 110	600 / 24	398 / 16	426 / 17	5.0 / 1.3	1.6 / 0.4	5.0 / 1.3	92	500
D4	Diesel	137 / 302	1180 / 46	720 / 28	730 / 29	-	5.4 / 1.4	10.0 / 2.6	-	500
D4 E	Diesel ⁴	156 / 344	1180 / 46	720 / 28	730 / 29	-	5.4 / 1.4	10.0 / 2.6	-	500

¹ Max. 0.7 Mpa (7 bar), air consumption 47 - 195 m³/h ² 50 Hz ³ Connection for 230V and 400V plugs with selector switch (on/off remote control) ⁴ with electric starter

Specifications | Power systems | Power Units (portable)

AP2 Air motor	BP2 Gasoline engine	EP2 Electric motor
Max. 0.7 Mpa (7 bar), air consumption 47 - 195 m ³ /h	Gasoline E10 unleaded, 91 Octane (ROZ)	400 V, 4 A, 3~, 50 Hz, plug CEE 16 A 230 V, 4 A, 1~, 50 Hz, plug CEE 16 A 110 V, 14.2 A, 1~, 50 Hz, plug CEE 16 A
<ul style="list-style-type: none"> · Maintenance unit consisting of compressed air filter with automatic condensate drain and oil nebulizer · Silencer · Rugged air motor · Ball valve with DN 20 claw coupling · Manifold for up to 3 device connections mounted 	<ul style="list-style-type: none"> · Honda gasoline engine (professional) · Complies with CARB/EPA environmental and occupational health and safety guidelines · The carburetor can be easily modified for continuous operation at altitudes above 1500 m · Manifold for up to 3 device connections mounted 	<ul style="list-style-type: none"> · Thermal motor protection (overheating protection for the motor) · Undervoltage release (the motor does not restart automatically after a power failure) · Plug with phase inverter (to change the direction of motor rotation) · Suitable for indoor use · Manifold for up to 3 device connections mounted

Specifications | Power system | Power Unit (mobile)

D4 Diesel engine
Diesel engine 3 - 7.5 kW Max. torque: 24.9 Nm
<ul style="list-style-type: none"> · Exhaust gas limit value certified according to EU 2016/1628 Stage 5 · Rugged Hatz brand engine with worldwide support · Very rugged and tilt resistant steel frame · Side mounting for transport of Splitters · Ideal for daily use in natural stone quarrying · Manifold for up to 5 device connections optional